



webMethods Roadmap What's New?

David Overos
Senior Director Product Marketing

November 13, 2018



DIGITAL BUSINESS PLATFORM

PLATFORM CAPABILITIES

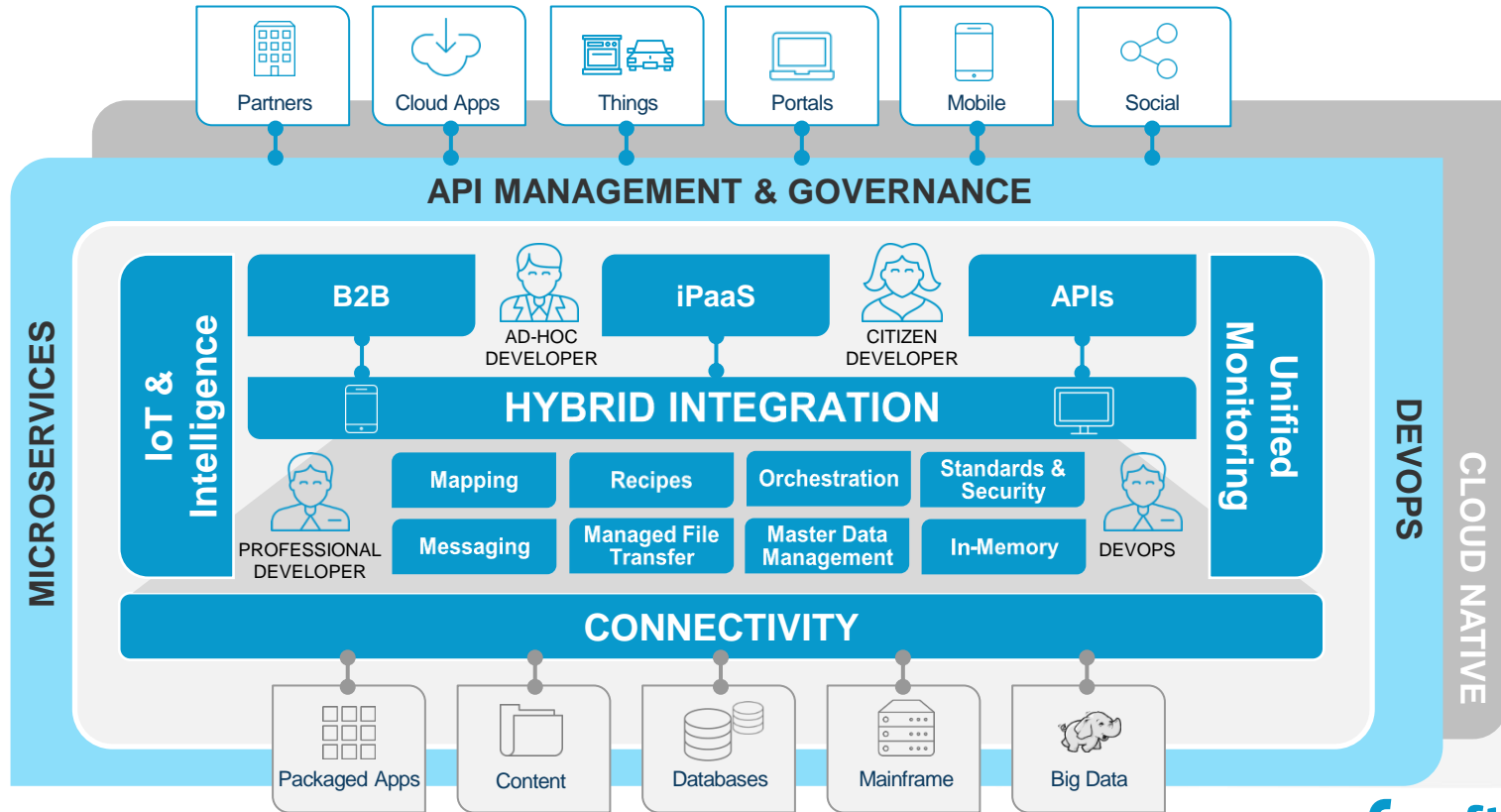


DIGITAL BUSINESS PLATFORM

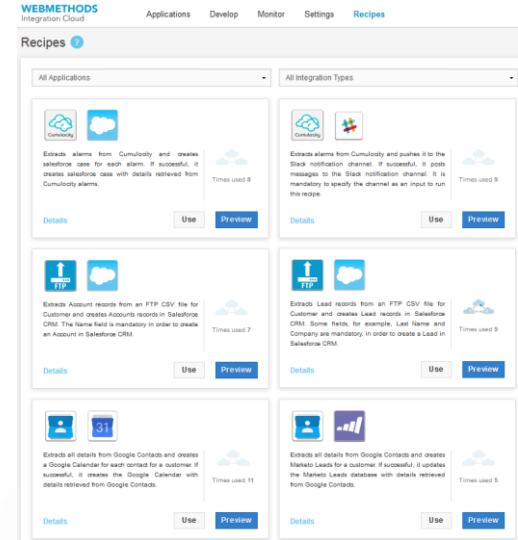
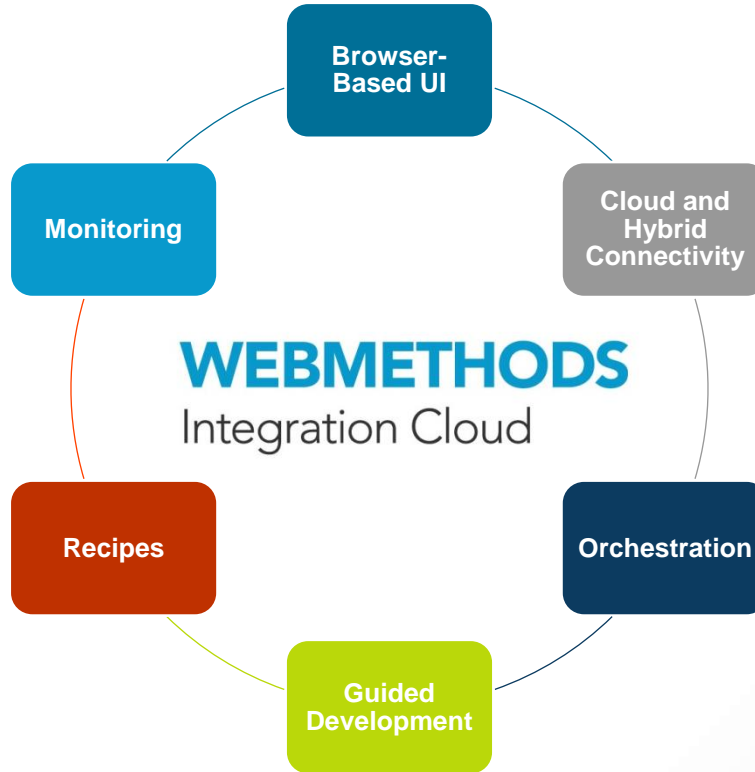
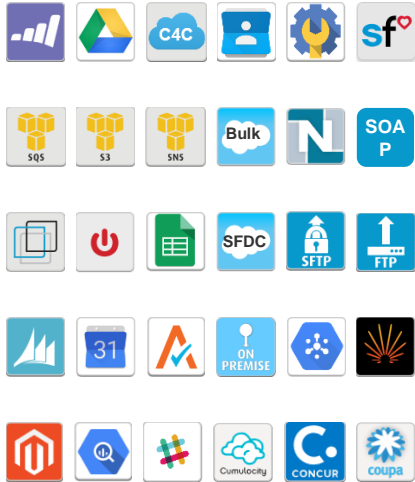
BUSINESS & IT TRANSFORMATION	PROCESS & APPLICATIONS	Dynamic Orchestration	Process Automation	Case Management	Robotic Process Automation
	Low-Code App Development	Mobile Enablement	Task & Work Management	Rules Management	Content Management
	INTEGRATION & API	Application & Cloud Integration	IoT & Big Data Integration	B2B Integration	Mainframe & Data Integration
	API Gateway & Portal	API Lifecycle Management	Microservices	Master Data Management	Managed File Transfer
	DATA & ANALYTICS	Streaming Analytics	Machine Learning	Edge Analytics	Data Preparation & Visualization
	In-Memory Store & Compute	Distributed Caching	Messaging	Event Routing & Persistence	Alerts & Actions
	DEVICES	Device Agents	Device Connectivity	Device Lifecycle Management	Connection Management
Digital Twin	Device Operations	Cloud Remote Access	Edge Services	Device Security	

WEBMETHODS HYBRID INTEGRATION PLATFORM

INTEGRATION AND APIS



WEBMETHODS INTEGRATION CLOUD IPAAS INTEGRATED WITH API & B2B



INTEGRATION KEY HIGHLIGHTS

WEBMETHODS 10.2 & 10.3

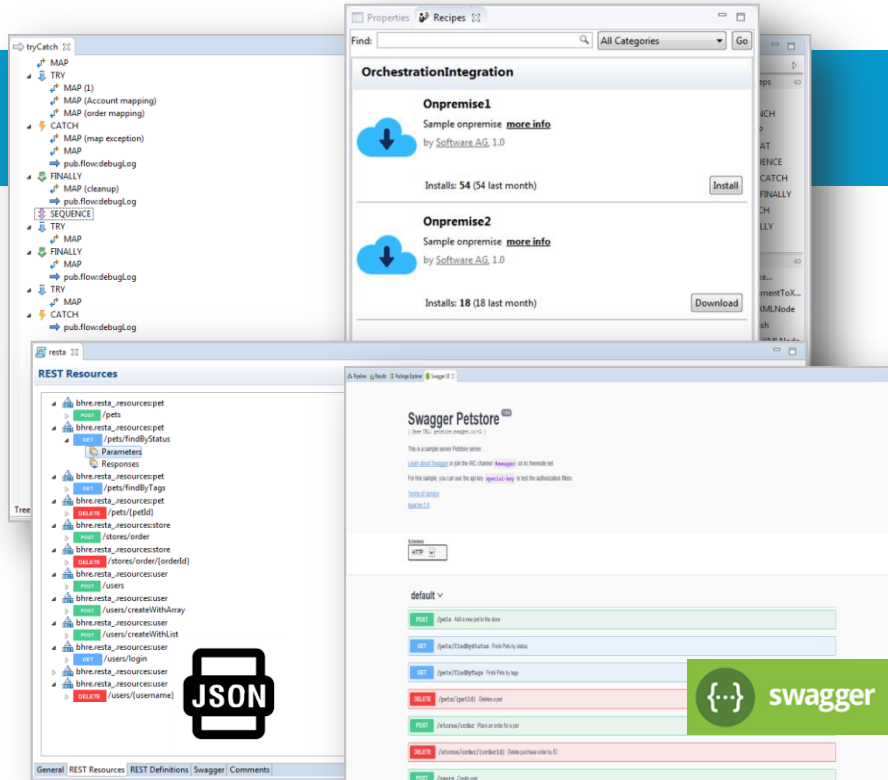


2018
**PRODUCT
RELEASE**

A VIRTUAL EVENT
OCTOBER 9-10-11

INTEGRATION SERVER

2018 RELEASE HIGHLIGHTS



API-LED HYBRID INTEGRATION

1

REST, Swagger & Web Sockets enhancements

2

Recipes for integration development

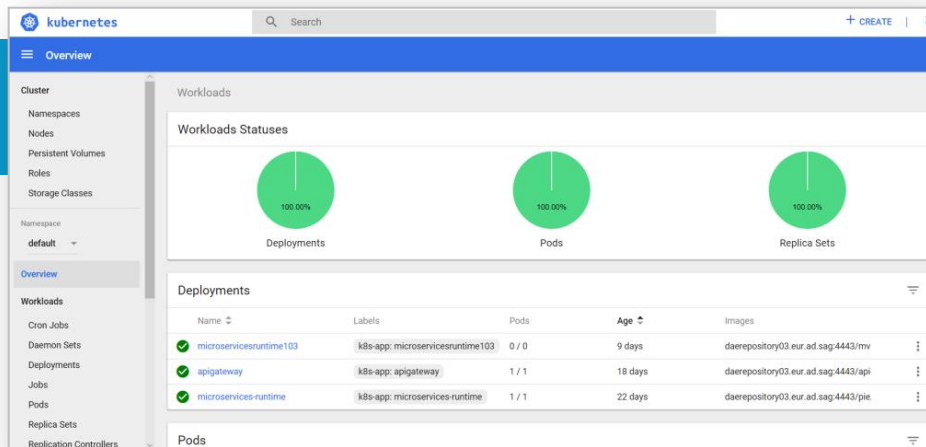
3

JSON API and JSON schema

4

Try Catch Flow constructs and Flat File schema enhancements

MICROSERVICES RUNTIME 2018 RELEASE HIGHLIGHTS

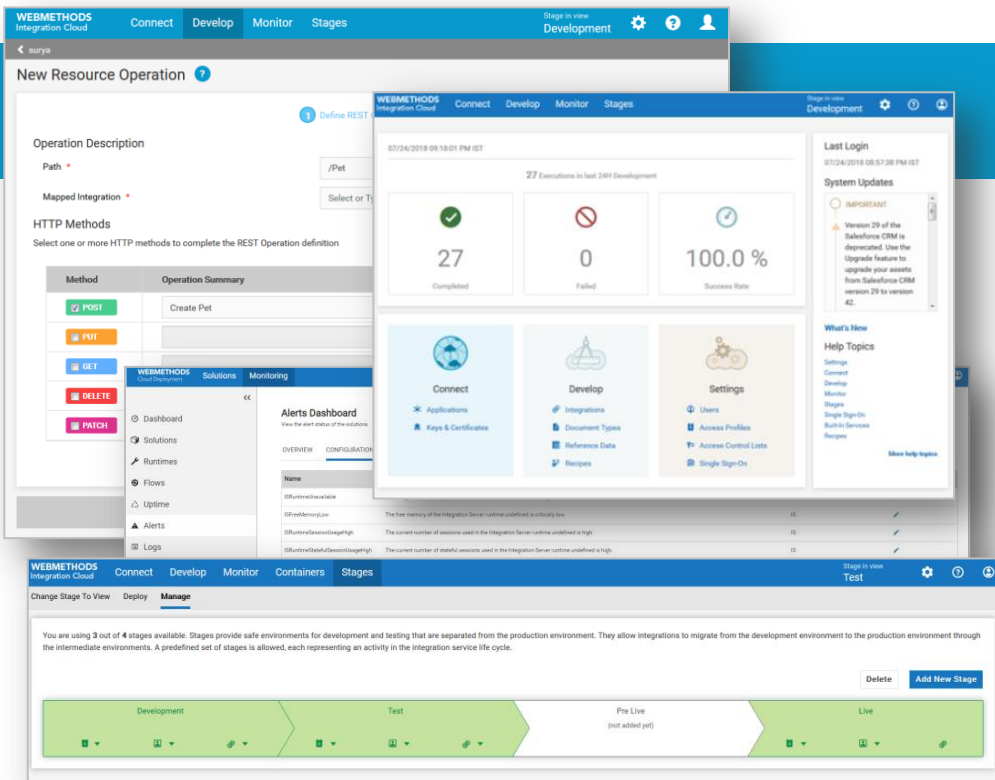


WEB SCALE MICROSERVICES

- 1 Kubernetes Certification
- 2 Health check and Prometheus-based metrics collection
- 3 Dynamic config for Docker images
- 4 Simplified deployment for Docker



INTEGRATION CLOUD 2018 RELEASE HIGHLIGHTS

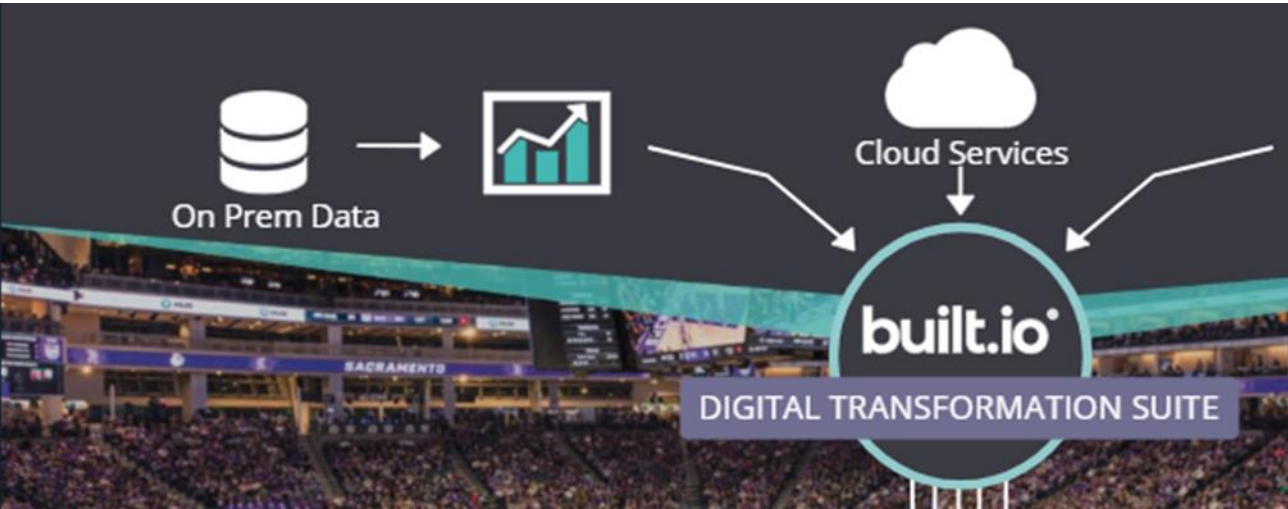


MULTI-CLOUD & MULTI-FUNCTION IPAAS

- 1 API first approach using REST
- 2 New constructs in Blockly UI (exists, switch, enhanced try-catch)
- 3 New landing page, enhanced monitoring and granular stage visibility
- 4 Available in AWS, Azure & Alibaba clouds

SOFTWARE AG ACQUIRES BUILT.IO FLOW™ IPAAS

EXTENDS LEADERSHIP IN HYBRID INTEGRATION



built.io flow

Flow iPaaS

Connect any app, service, or device to automate workflows

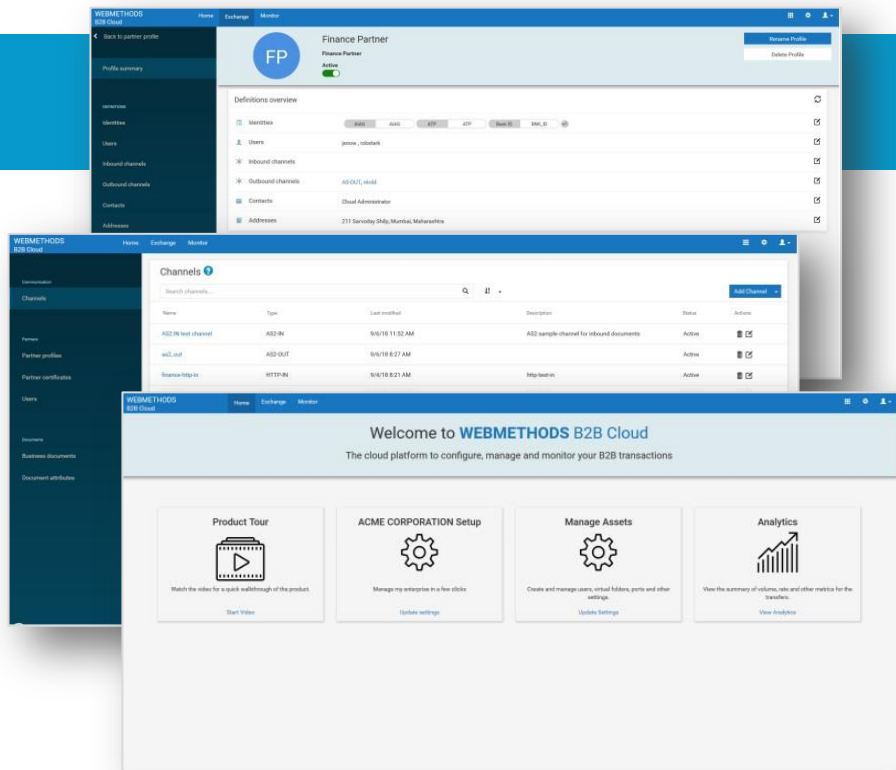
Flow Embed

Embedded connectivity into any SaaS application

- Brings modern Node.js technology, FaaS and 160+ new connectors
- Integrating Built.io Flow with Software AG's leading iPaaS, IoT, API and B2B capabilities uniquely delivers an unmatched integration offering
- Software AG gains analyst recognized iPaaS offering

B2B IN THE CLOUD

2018 RELEASE HIGHLIGHTS

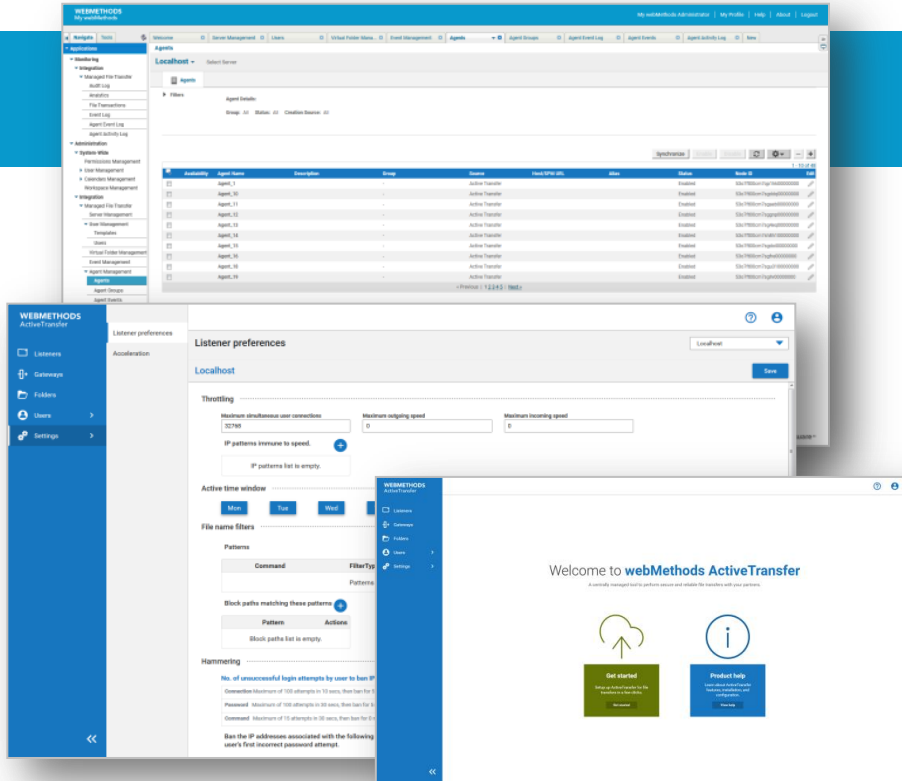


NEW B2B AS A SERVICE

- 1 Partner Management
- 2 Support for AS2, HTTP, and EDI ANSI X12
- 3 Basic transaction analysis & processing rules
- 4 Document processing using Integration Cloud

ACTIVE TRANSFER

2018 RELEASE HIGHLIGHTS



AGENT-BASED FILE TRANSFER

- 1 New UX driven UI based on Angular 5
- 2 Automate remote file transfers through agents
- 3 Centralized management and installation of agents
- 4 Support for DB partitioning

CONNECTIVITY TO 160+ APPS

2018 RELEASE HIGHLIGHTS

IOT



CLOUD



2018
**PRODUCT
RELEASE**

INTEGRATION

BIG DATA



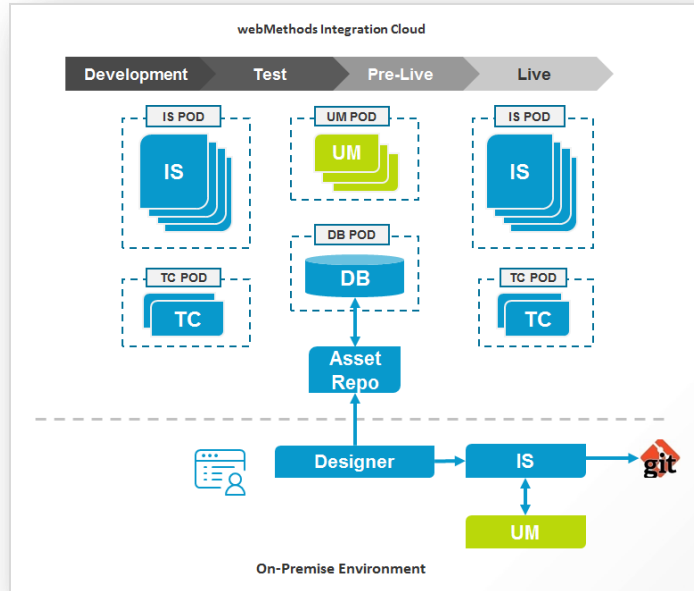
ADAPTERS & E-STANDARDS



CLOUD DEPLOYMENT & MIGRATION

2018 RELEASE HIGHLIGHTS

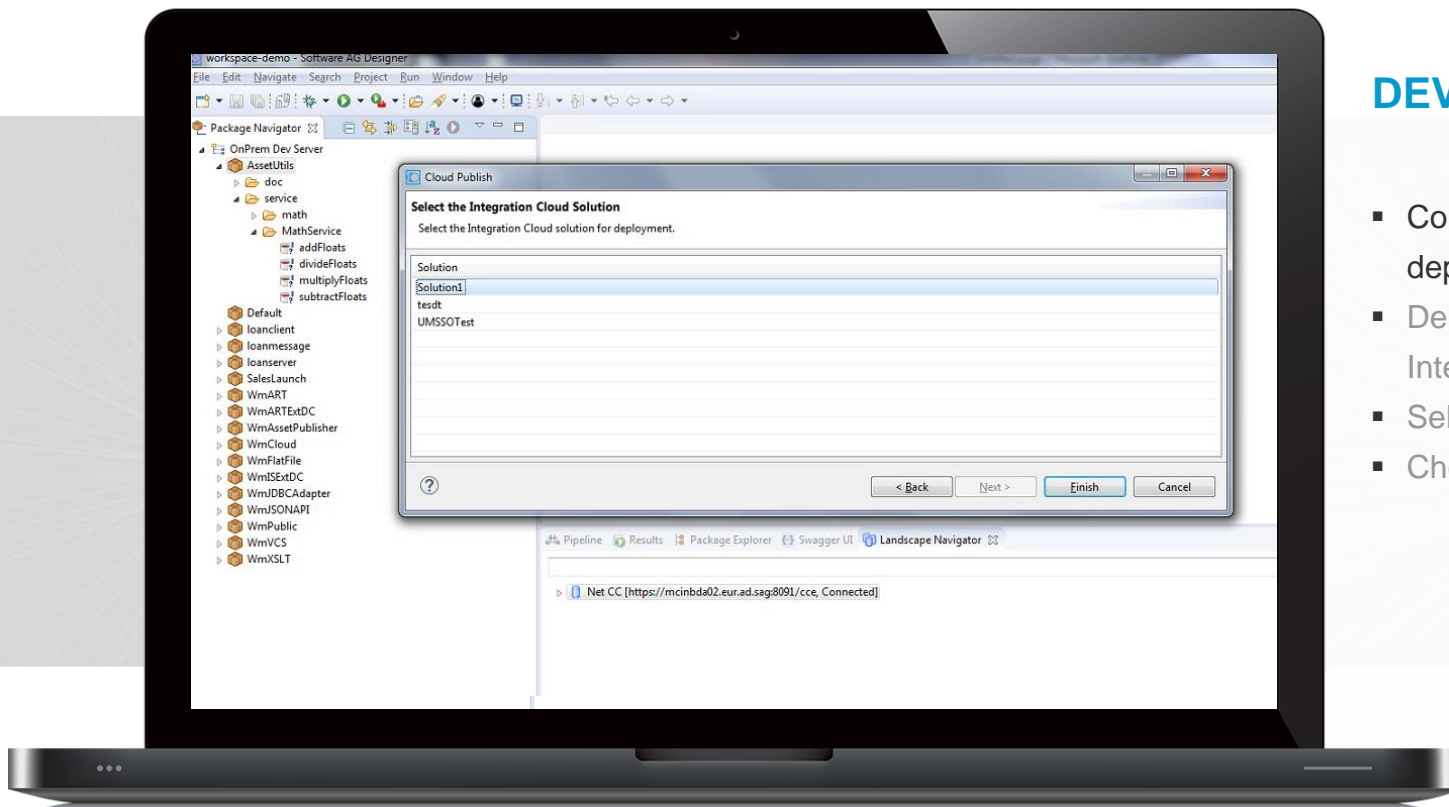
IPAAS FOR PROFESSIONAL DEVELOPERS



- 1 Develop in Designer and deploy to Integration Cloud
- 2 Automatic upgrade, fix and patch management
- 3 Hybrid connectivity to on-premises resources
- 4 End-to-end monitoring in the cloud

DEVELOPMENT FOR THE CLOUD

2018 RELEASE HIGHLIGHTS



DEVELOP & STAGE

- Configure Designer to deploy to a cloud solution
- Deploy from Designer to Integration Cloud
- Select assets to deploy
- Choose destination solution

HYBRID INTEGRATION IN THE CLOUD

2018 RELEASE HIGHLIGHTS

The screenshot displays the WebMethods Cloud Deployment interface. The top navigation bar includes 'Solutions' and 'Monitoring'. The breadcrumb path is 'Solutions > Solution1 > AssetUtils > service > math > processMapping'. The main area shows a 'Service Tree' with 'Input/Output' and 'Logged Fields' tabs. The 'processMapping' configuration is visible, featuring a flowchart with 'Branch', 'Sequence', 'Map', and 'Loop' components. A 'pub.flow.debugLog' component is highlighted. On the right, the 'processMapping' configuration details are shown, including a 'Comments' field and a 'General' section with various settings.

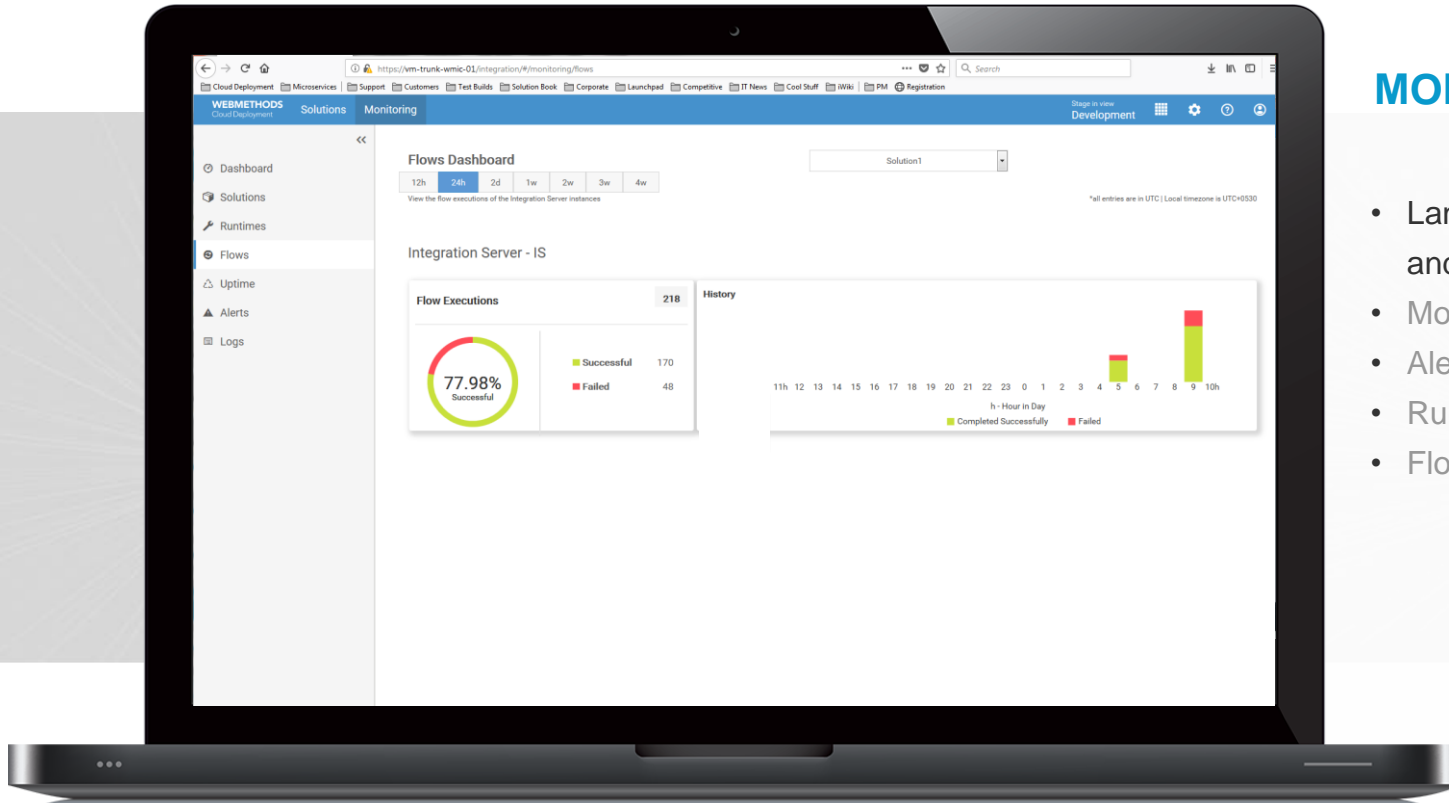
General	
Run time	
Statuses	True
Cache results	False
Cache expire	15
Reset cache	
Prefetch	False
Prefetch activation	1
Exclude locale	Sniff
HTTP URL alias	
Pipeline debug	1
Default xmlFormat	
Allowed HTTP methods	Head,delete,post,get,options,put,patch
Transient error handling	
Max retry attempts	0
Retry interval	0
Audit	
Universal Name	
Output template	

CLOUD DEPLOYMENT

- Tenant chooses cloud first or deploy from on-premises
- Select deployment landscape
- Configure a solution to add
- Asset browser can be used to browse solutions
- Blockly interface simplifies orchestration

MONITORING IN THE CLOUD

2018 RELEASE HIGHLIGHTS



MONITOR & ALERT

- Landing page: high-level and critical information
- Monitoring dashboard
- Alerts dashboard
- Runtimes dashboard
- Flows dashboard

API MANAGEMENT

WEBMETHODS API MANAGEMENT PLATFORM



API Portal

- Promote APIs
- Document usage
- Enable registration
- Community and collaboration
- Testing



API Gateway

- Protect your APIs from unregistered usage
- Protect your backend systems from malicious attacks
- Monitor and track usage for monetization and product improvement



API Catalog

- Define your APIs
- Manage API lifecycle
- API governance
- Impact analysis



API Consumption

- Consume SaaS / PaaS APIs
- Connectors to SaaS apps
- Runtime governance policies
- API consumption governance

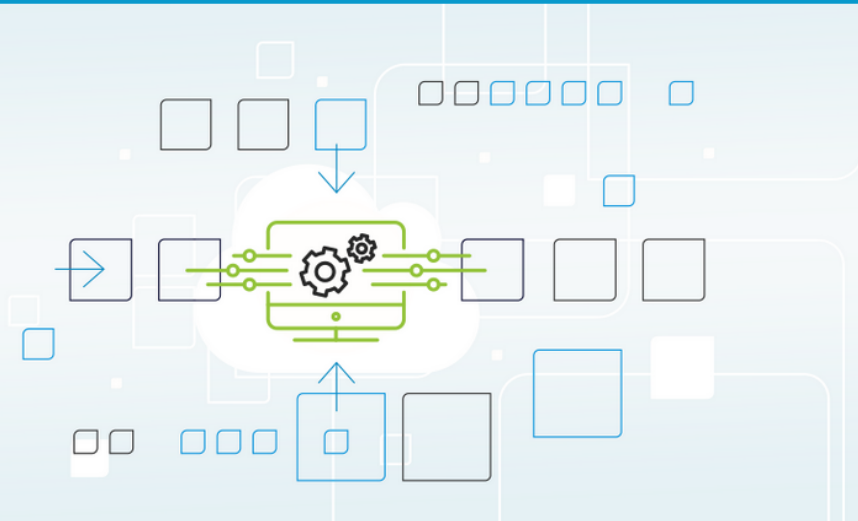
WEBMETHODS API CLOUD

WEBMETHODS
API Cloud

przemek

Welcome to WEBMETHODS API Cloud

Ent-to-end API management solutions
powered by WEBMETHODS



API Gateway

The API Gateway is where you protect your APIs. This is where you define who can access your APIs, as well as how you will protect them from threats and unauthorized access.

[➔ Launch](#)



API Portal

The API Portal is where you showcase your APIs to your developer and partner community. This is where you provide documentation, testing and samples, and also where developers can register to use your APIs.

[➔ Launch](#)

API MANAGEMENT KEY HIGHLIGHTS

WEBMETHODS 10.2 & 10.3

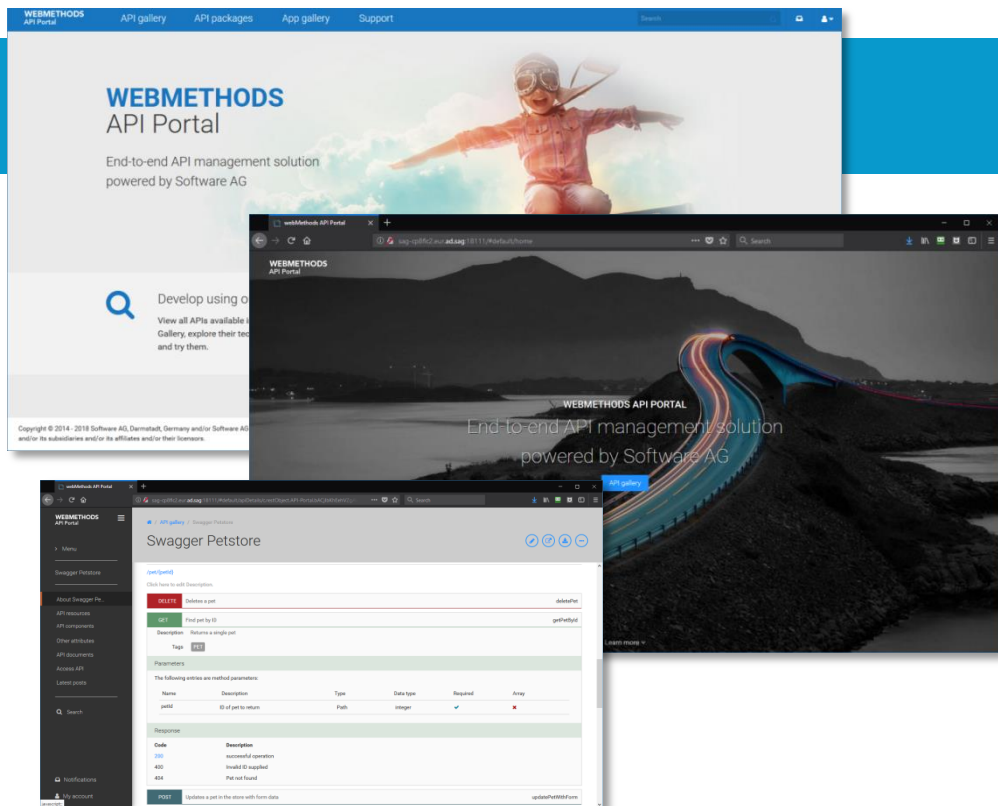


2018
**PRODUCT
RELEASE**

A VIRTUAL EVENT
OCTOBER 9-10-11

API PORTAL

2018 RELEASE HIGHLIGHTS



OPEN & EASY TO CUSTOMIZE

- 1 Easy customization and branding
- 2 New sample out-of-the-box visual themes
- 3 OpenAPI 3.0 support
- 4 Multiple LDAP configurations to support B2B communities

WELCOME TO THE CARNIVAL API PORTAL!

Discover & Explore Carnival APIs!

[BROWSE API GALLERY](#)[LOG IN](#)[REGISTER](#)

DEVELOP USING OUR APIS

View all APIs available in our API gallery, explore their technical details, and try them.

[MORE DETAILS »](#)

REGISTER FOR FREE

Learn how to join the user community and how to request access tokens for APIs.

[MORE DETAILS »](#)

OUR DEVELOPER COMMUNITY

Visit our support forum to find out more about our APIs and to learn how other developers use them.

[SHOW DETAILS »](#)

ABU DHABI DIGITAL GOVERNMENT API PORTAL

Log in

Register

The Abu Dhabi Digital Government API Portal is a self-service portal that allows ADGEs and ADSIC partners to browse API's catalogue, request an access to APIs and use them to build applications on their own platforms.

API PORTAL CUSTOMERS

GRAINGER - WHITELISTED

Grainger API Portal

Discover and try Grainger APIs

Log in

Register



Develop using our APIs

View all APIs available in our API Gallery, explore their technical details, and try them.



Register for free

Learn how to join the user community and how to request access tokens for APIs.



Socialize

Visit our support forum to find out more about our APIs and to learn how other developers use them.

API GATEWAY 2018 RELEASE HIGHLIGHTS

Swagger Petstore

View API details, basic and technical information, resources and methods available, and API specifications.

API details | Scopes | Policies | Mashups | Applications | Analytics

Policy catalog

- Threat protection
- Transport
- Identify & Access
 - Authorize User
 - Identify & Authorize Application
- Request Processing
- Routing
- Traffic Monitoring
- Response Processing
- Error Handling

Identify & Authorize Application

Condition

OR

- Application Identification condition

Application Lookup condition

Registered applications

Identification Type

JWT

- Application Identification condition

Application Lookup condition

Registered applications

Identification Type

OAuth2 Token

- Application Identification condition

Application Lookup condition

Registered applications

Identification Type

OpenID Connect

Allow anonymous

False

Documentation

Swagger 2.0 <http://sag-cp8f6c2.eur.ad.sag.5555/rest/apigateway/apis/01844664-859a-40fe-ae47-a78716f8b897?format=swagger>
Download Swagger Petstore json

RAML 0.8 <http://sag-cp8f6c2.eur.ad.sag.5555/rest/apigateway/apis/01844664-859a-40fe-ae47-a78716f8b897?format=raml>
Download Swagger Petstore raml

OpenAPI 3.0 <http://sag-cp8f6c2.eur.ad.sag.5555/rest/apigateway/apis/01844664-859a-40fe-ae47-a78716f8b897?format=openapi>
Download Swagger Petstore json

Version: 10.3.0.0.621

SECURE STANDARDS BASED GATEWAY

- 1 Open ID, OAuth2, JWT enhancements
- 2 Enhanced integration with 3rd party authorization servers
- 3 Data masking policy
- 4 OpenAPI 3.0

API GATEWAY 2018 RELEASE HIGHLIGHTS

The screenshot displays the API Gateway console interface. At the top, there are navigation tabs for 'WEBMETHODS', 'APIs', 'Policies', 'Applications', and 'Packages'. The main content area is titled 'LoanInventory' and shows a flow diagram for a Mashup. The flow starts with a 'Start' node, followed by a 'GetAccount' step (GET method) with endpoint '/customer/custo...'. This leads to a 'Get Loan' step (GET method) with endpoint '/loans/{account...}'. Finally, it leads to a 'Close Loan' step (PUT method) with endpoint '/loans/{loanId...}'. The flow ends at a 'End' node. To the right of the flow diagram, there is a 'Policy properties' panel for 'Mashup Routing'. It includes fields for 'Mashup step name' (Close Loan), 'API Endpoint' (LoanAPI), 'Resource' (/loans/{loanId}/close), and 'Method' (put). Below this, there are sections for 'Headers', 'Use Incoming Headers', and 'Path Parameters'. The 'Path Parameters' section shows a table with one entry: 'loanId' with the value '\$(response[Get Loan] payload.loanId)'. At the bottom of the console, there is a 'Service registry' section with a table listing 'EurekaDefault' and 'ServiceConsulDefault'.

Path Parameter Name	Path Parameter Value
loanId	\$(response[Get Loan] payload.loanId)

Name	Description	Action
EurekaDefault	Eureka is a REST based service that is primarily used in the AWS cloud for locating services for the purpose of load balancing and failover of middle-tier servers	
ServiceConsulDefault	Service Consul is a tool for discovering and configuring services in IT infrastructure.	

API PRODUCT MANAGER

1

API Mashups

2

Asynchronous APIs & event enabling of APIs

3

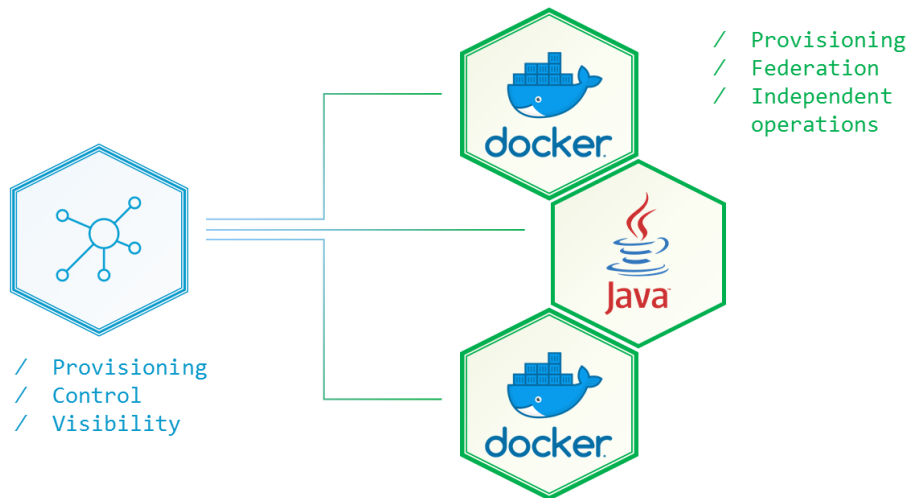
API hot deployment

4

Integrated runtime service registries (Consul & Eureka)

MICROGATEWAY

2018 RELEASE HIGHLIGHTS



MANAGE API ACCESS TO MICROSERVICES

- 1 New independent Microgateway with option to federate with main API Gateway
- 2 Multiple form factors and deployment options
- 3 Easily provision and scale across Microservices architecture
- 4 Very low footprint runtime with fast startup

PROCESS & APPLICATIONS

DIGITAL BUSINESS PLATFORM

PLATFORM CAPABILITIES

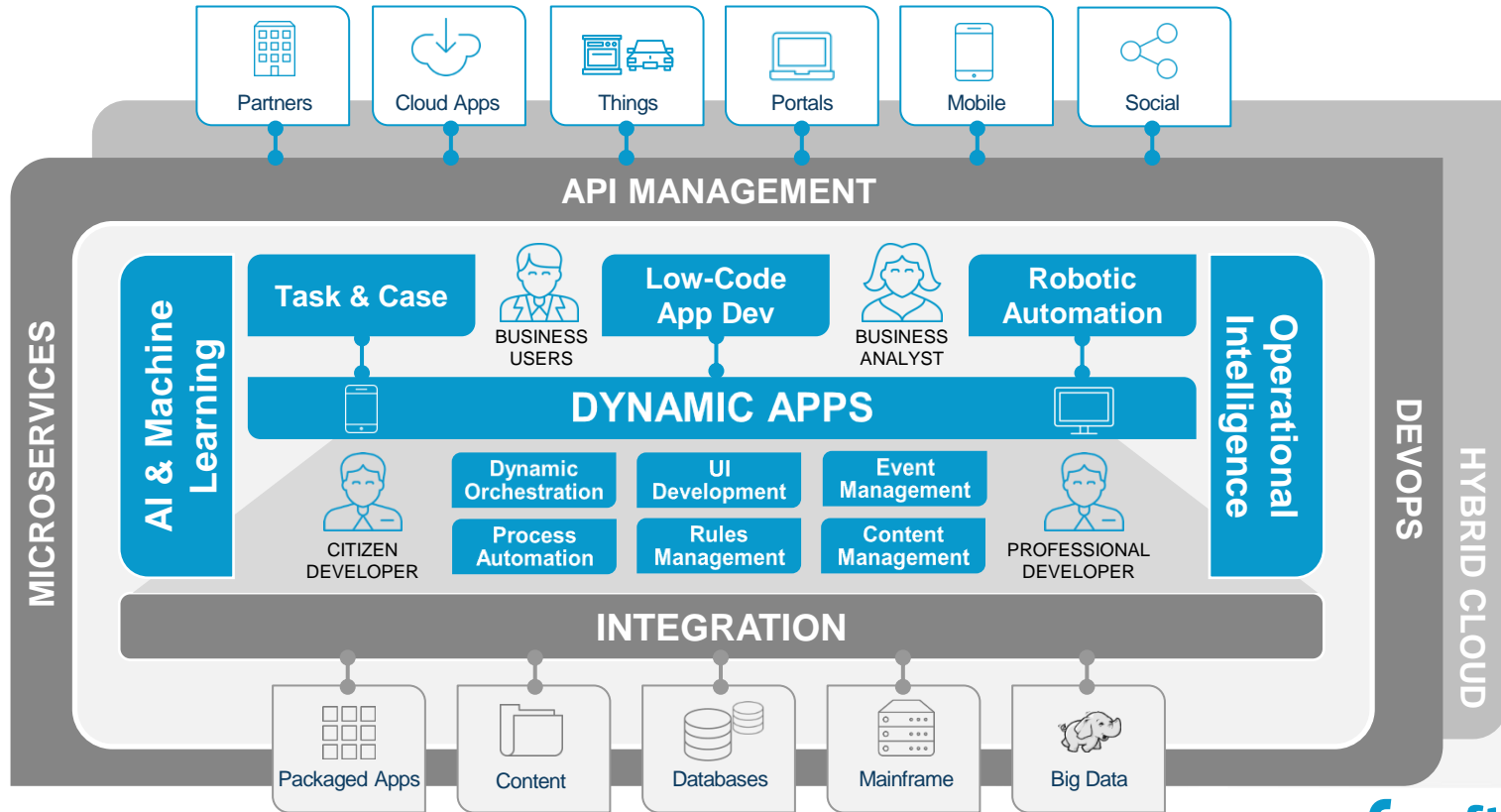


DIGITAL BUSINESS PLATFORM

BUSINESS & IT TRANSFORMATION	PROCESS & APPLICATIONS	Dynamic Orchestration	Process Automation	Case Management	Robotic Process Automation	
	Business Strategy & Planning	Low-Code App Development	Mobile Enablement	Task & Work Management	Rules Management	Content Management
	CUSTOMER JOURNEYS	INTEGRATION & API	Application & Cloud Integration	IoT & Big Data Integration	B2B Integration	Mainframe & Data Integration
	DESIGN & ANALYSIS	API Gateway & Portal	API Lifecycle Management	Microservices	Master Data Management	Managed File Transfer
	Governance, Risk & Compliance	DATA & ANALYTICS	Streaming Analytics	Machine Learning	Edge Analytics	Data Preparation & Visualization
	Process Mining	In-Memory Store & Compute	Distributed Caching	Messaging	Event Routing & Persistence	Alerts & Actions
	Enterprise Architecture	DEVICES	Device Agents	Device Connectivity	Device Lifecycle Management	Connection Management
Portfolio Management	Digital Twin	Device Operations	Cloud Remote Access	Edge Services	Device Security	

WEBMETHODS DYNAMIC APPS PLATFORM

DIGITAL PROCESS AUTOMATION AND LOW-CODE APPS



PROCESS & APPLICATIONS KEY HIGHLIGHTS

WEBMETHODS 10.2 & 10.3

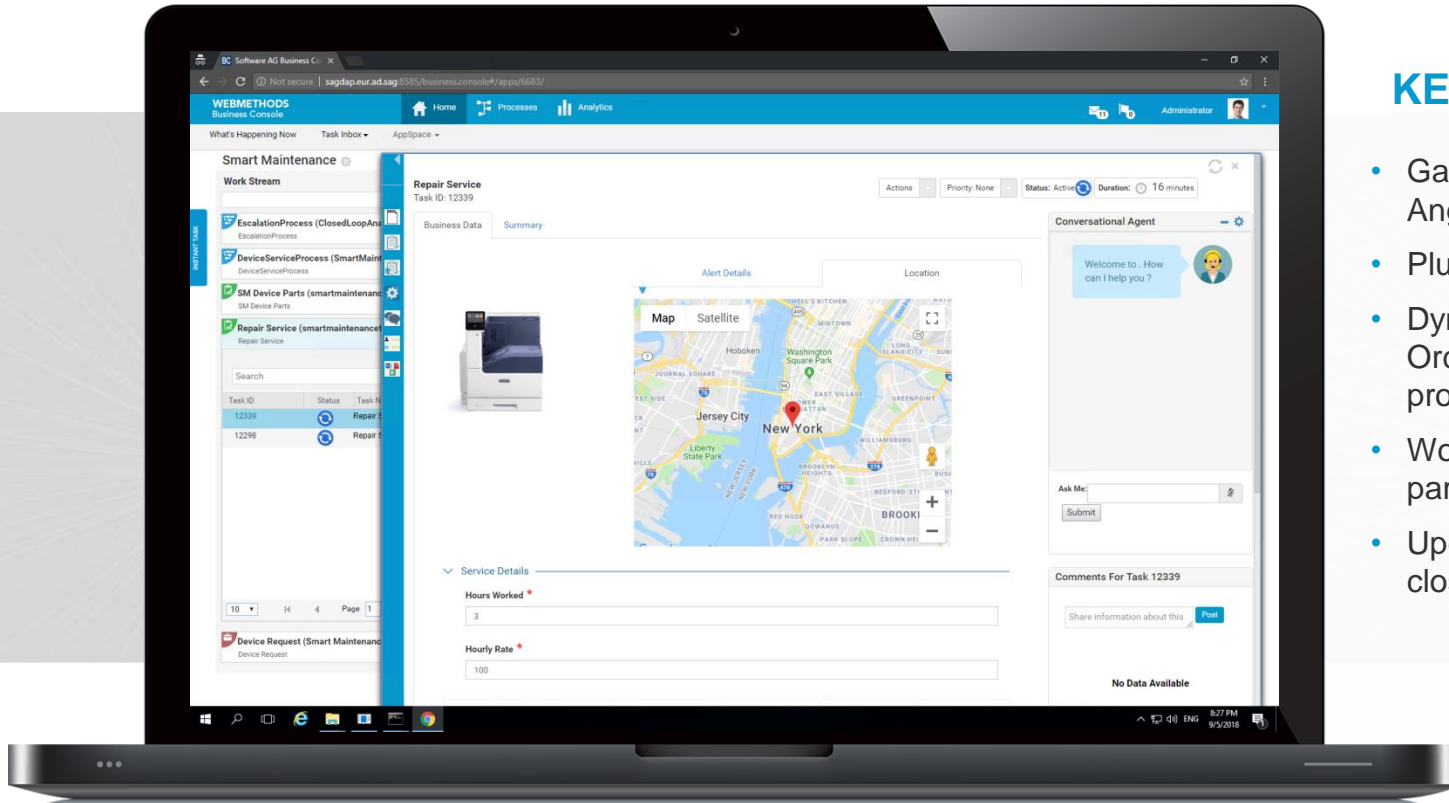


2018
**PRODUCT
RELEASE**

A VIRTUAL EVENT
OCTOBER 9-10-11

BUSINESS CONSOLE (BPMS)

2018 RELEASE HIGHLIGHTS

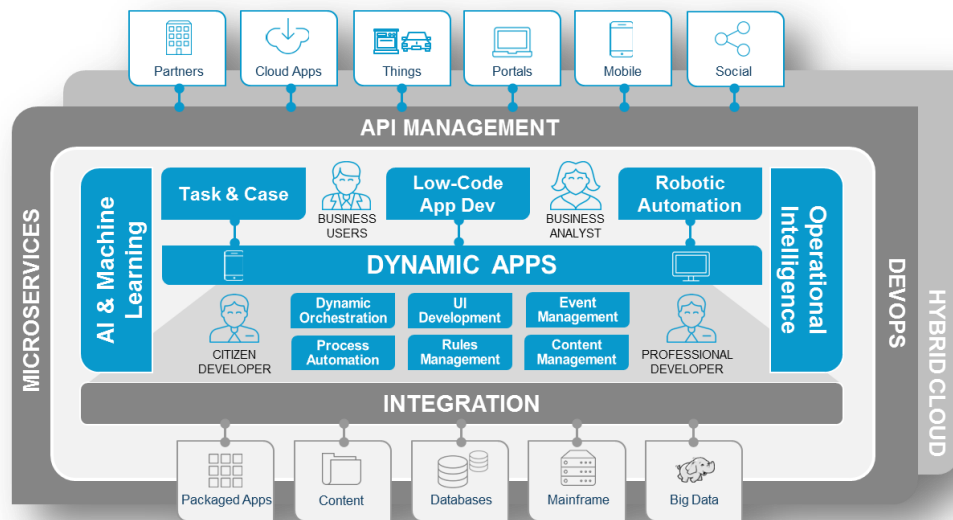


KEY HIGHLIGHTS

- Gadget support for Angular 5.0
- Plugin chatbot framework
- Dynamic Business Orchestrator – Next gen processing
- Workflow patterns (group, parallel, voting)
- Upgraded dashboard for closed loop analytics

DYNAMIC APPS ARCHITECTURE

2018 RELEASE HIGHLIGHTS

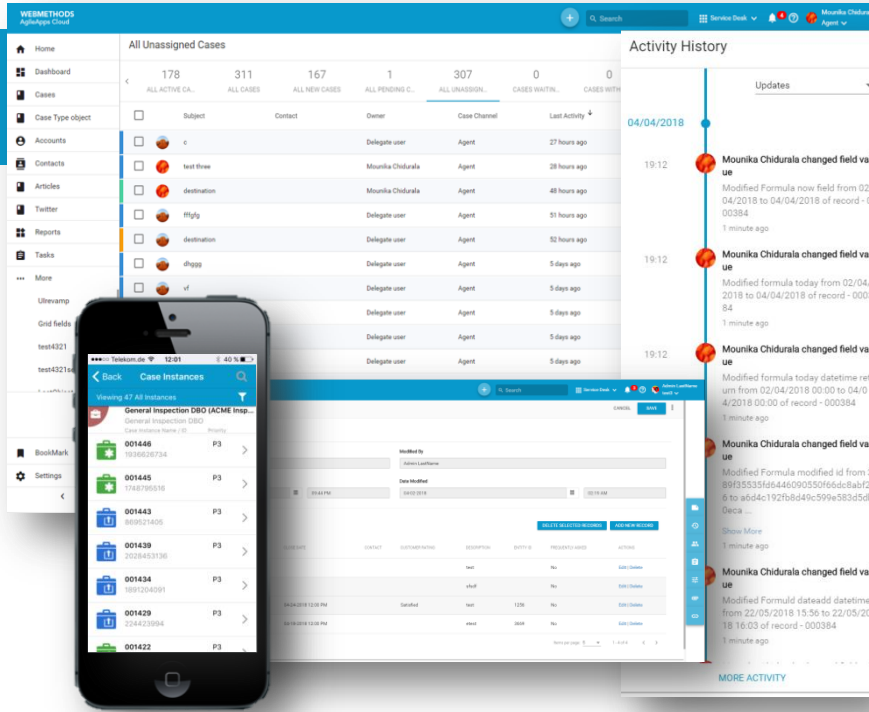


UNIFIED COMPUTE NODE

- 1 Single node hosting Process, Task, Rules and Case engines on Integration Server
- 2 In process communication between Process, Task and Case
- 3 Angular 5 based gadget support on compute node
- 4 Digital Events for IoT processes and tasks

DYNAMIC APPS – AGILE EDITION (AGILE APPS)

2018 RELEASE HIGHLIGHTS

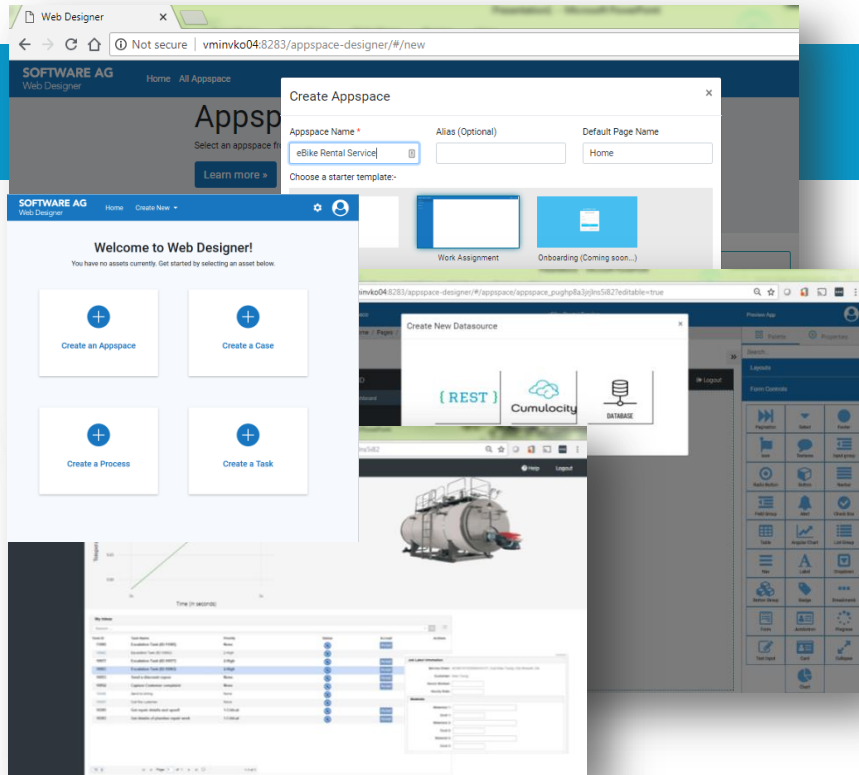


LOW-CODE APPLICATION DEVELOPMENT PLATFORM

- 1 New responsive runtime UI based on Angular 5
- 2 Sites enhancements using Gadgets
- 3 Native case support in hybrid mobile apps
- 4 Enhanced content management integration (CMIS)

DYNAMIC APPS – ENTERPRISE EDITION

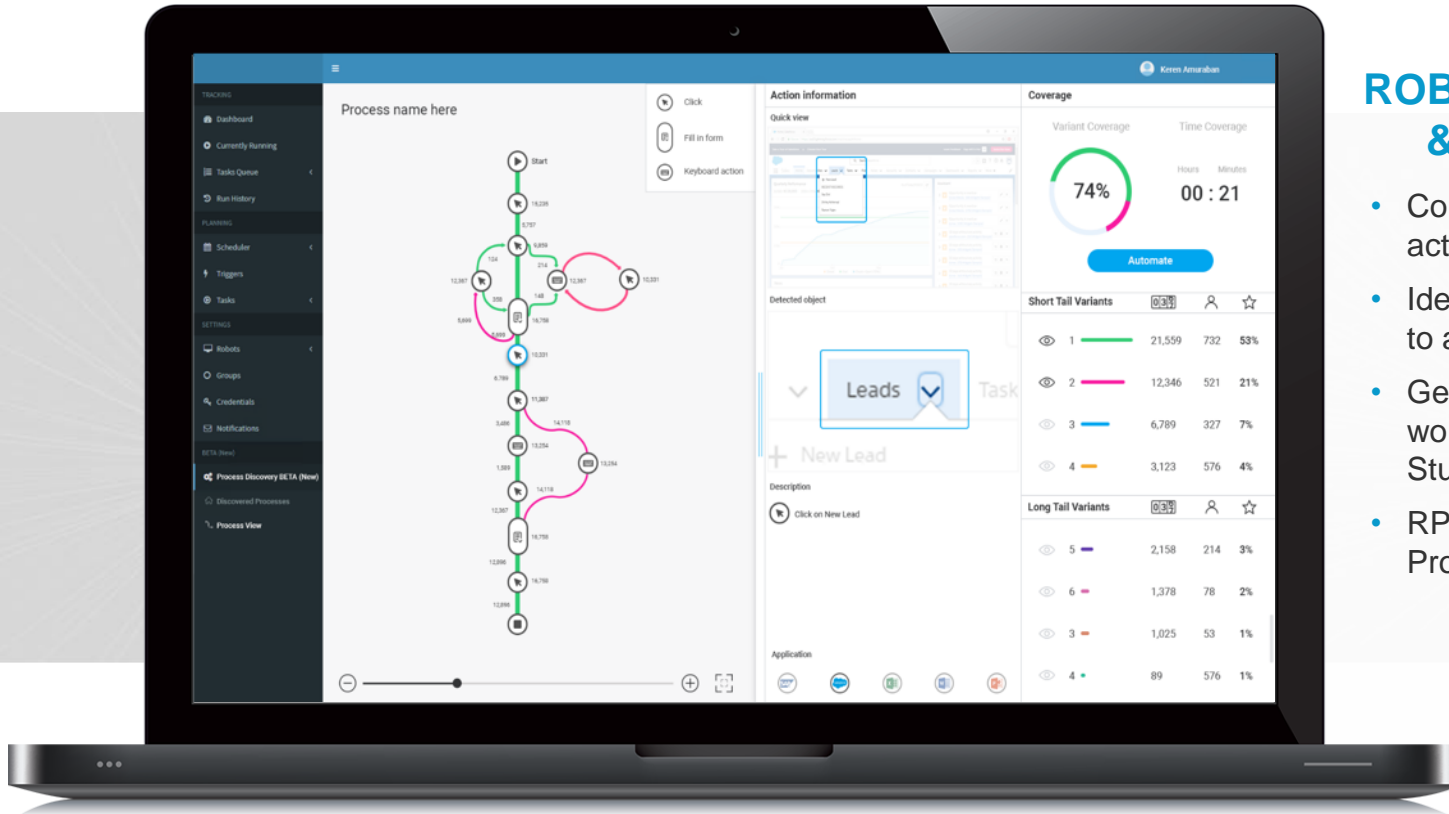
2018 RELEASE HIGHLIGHTS



UNIFIED WEB-BASED DESIGN AND COMPUTE NODE

- 1 Web-based Designer for building task, process, case and forms UI
- 2 Template based apps with drag & drop UI and logic development
- 3 Pre-built data sources & In-context actions
- 4 BPMN2 import for easy ARIS integration

ROBOTIC PROCESS AUTOMATION 2018 RELEASE HIGHLIGHTS



ROBOTIC PROCESS & DISCOVERY

- Collects data on user actions and workflows
- Identifies which processes to automate
- Generates automation workflows directly in RPA Studio
- RPA Integration with Process

